



**EXAMPLES OF ANIMAL CARE AND USE
PROGRAM STRUCTURES, BY
CATEGORY OF INSTITUTION**

**DR. MICHAEL BAAR, DIRECTOR, ASSESSMENTS
AND CERTIFICATION**

JUNE 14, 2014

.CCACC

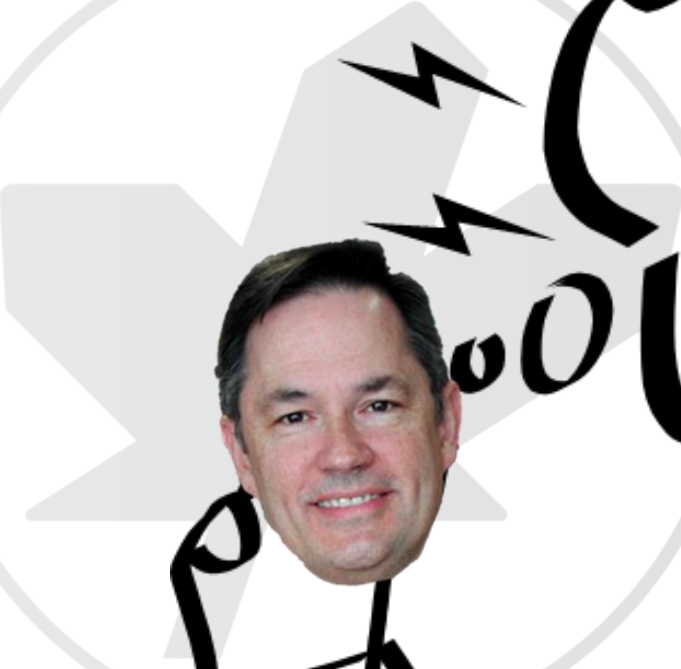
zzzz

STRUCTURE
reporting lines
authority



.CCFA.

.CCAAO.



**ANIMAL
WELFARE**
animal care
analgesia
enrichment

Principle no.1

- ⦿ Avoid, minimize or appropriately manage any real or perceived conflict of interest
 - Arm's-length relationship



Principle no.2

- Prioritize animal welfare through effective communications amongst all stakeholders
 - Arms linked relationship



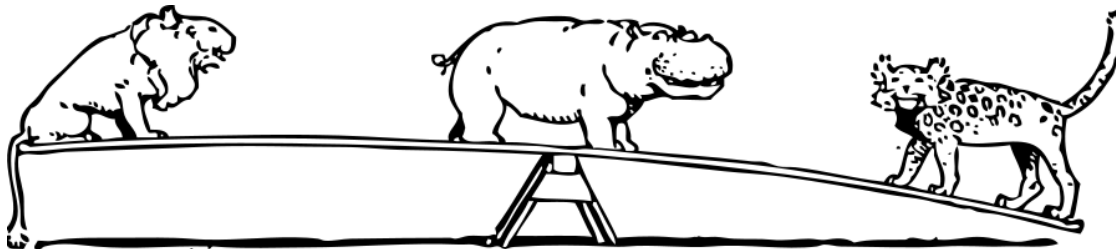
Principle no.3

- ACCs should be at the center of any animal care and use program
 - Represents all stakeholders' perspectives



Principle no.4

- A balanced animal care and use program should include two main components overseen by a senior administrator:
 - a compliance component
 - a service/operations component



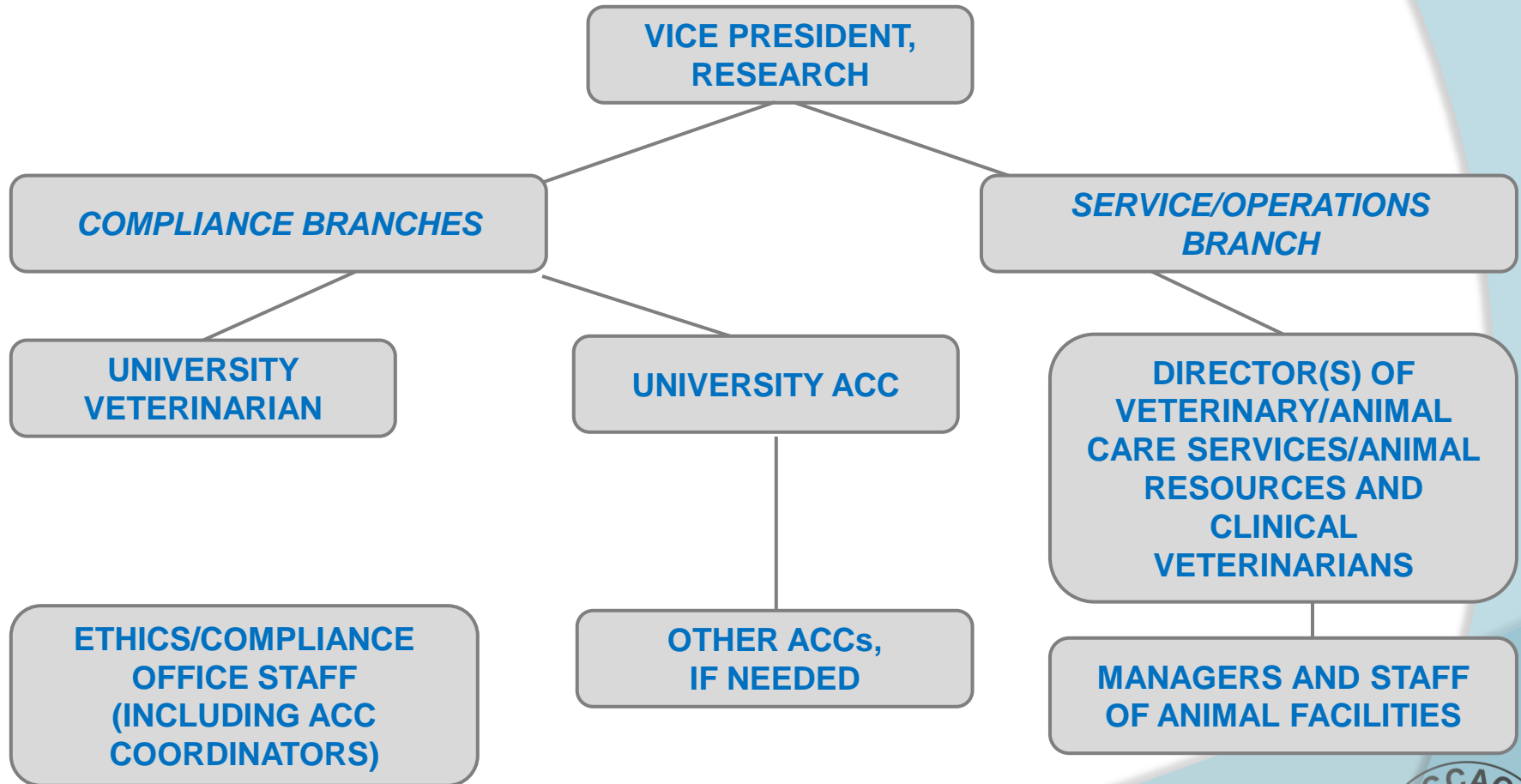
Principle no.5

- The senior administrator must be in a position to oversee the entire animal care and use program, not only one part of it



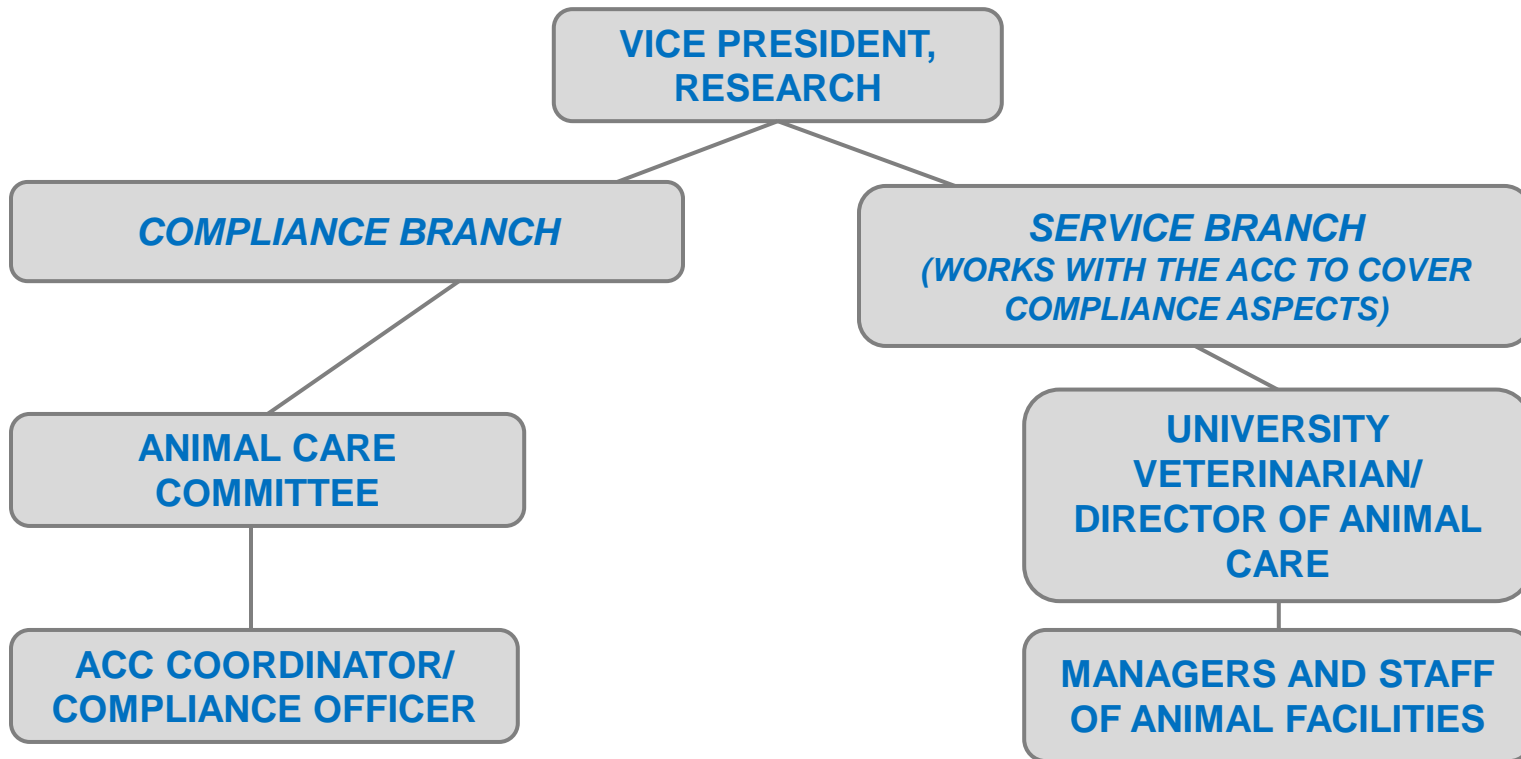


Large Universities



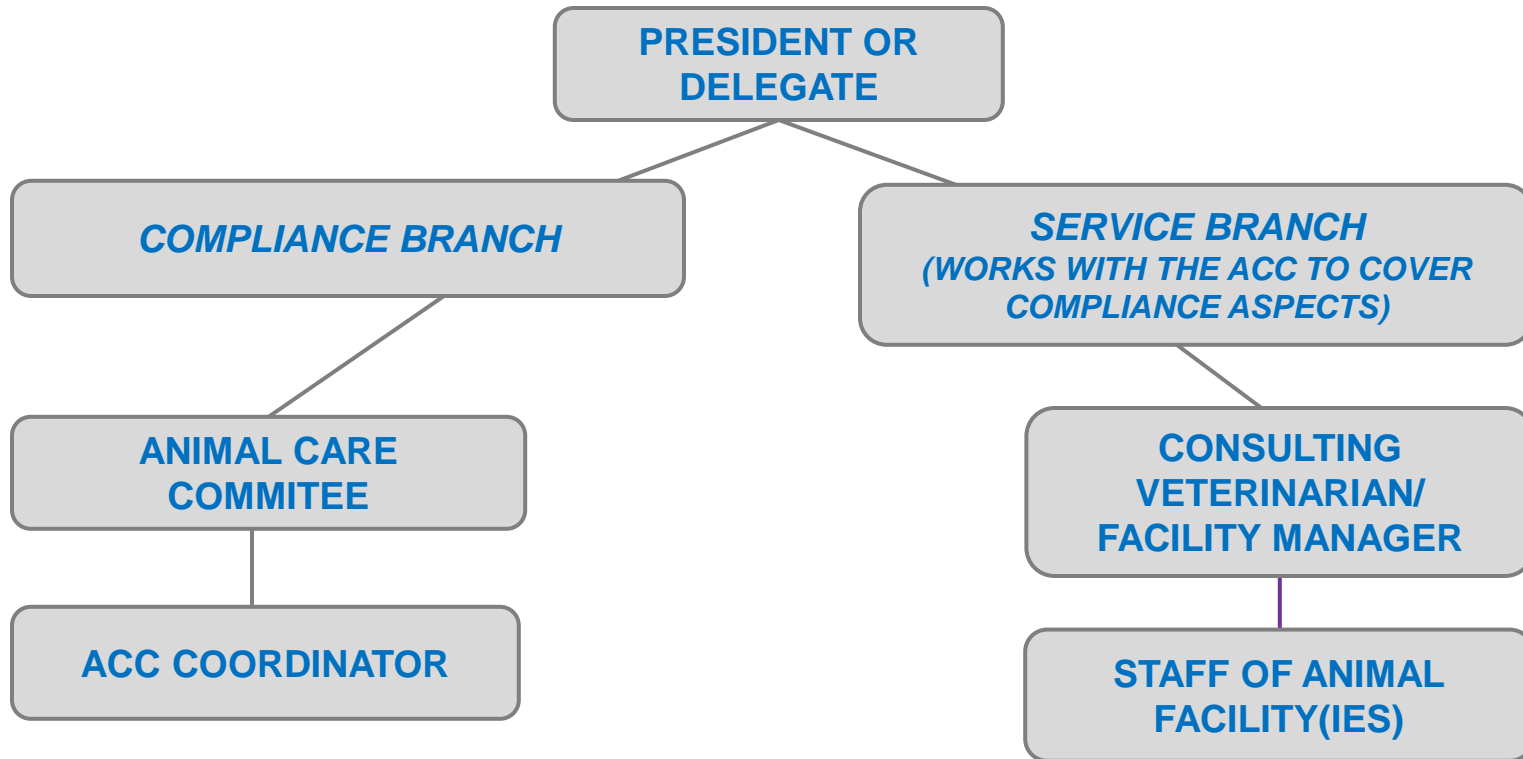


Medium-sized Universities



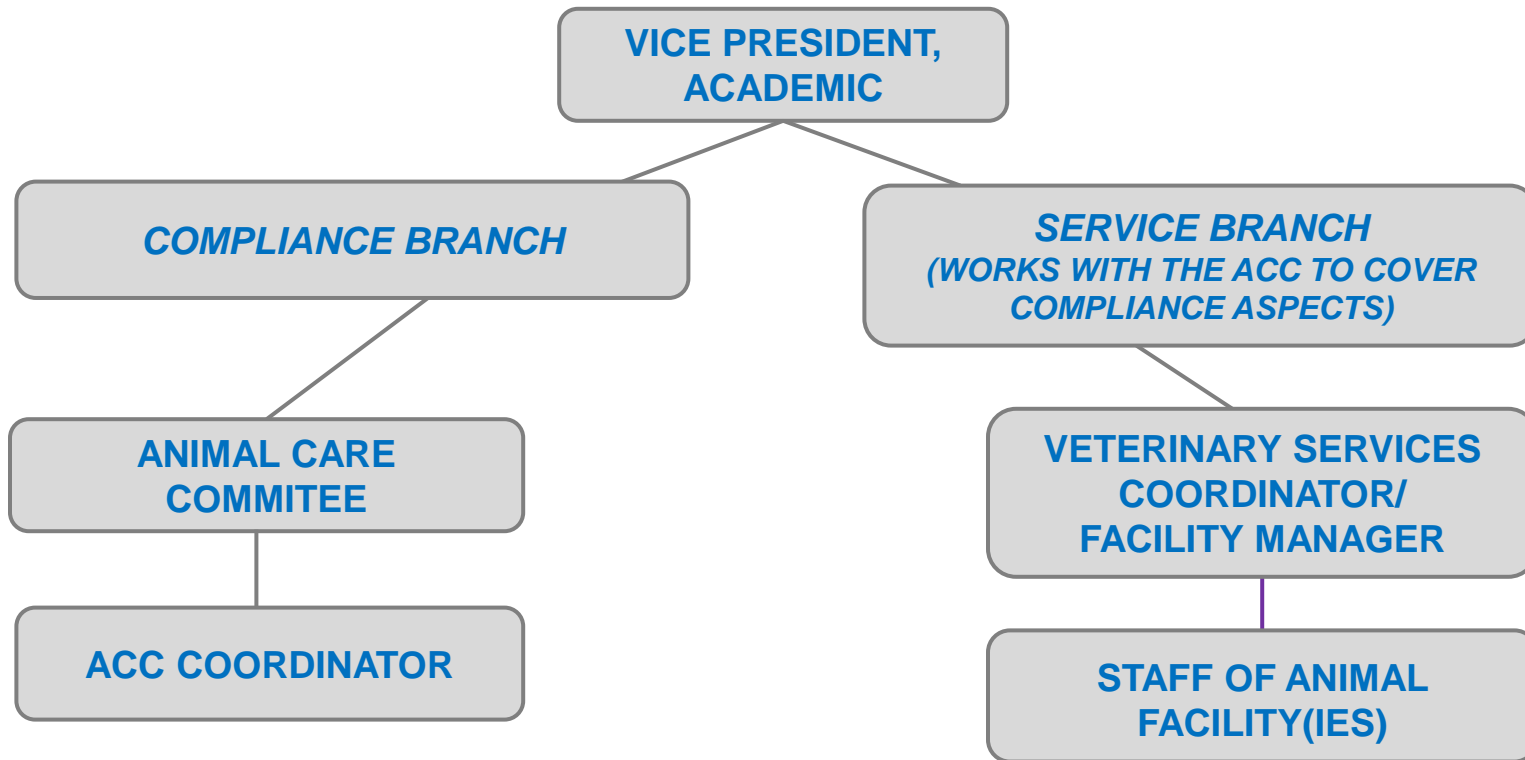


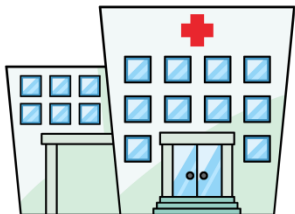
Small Universities



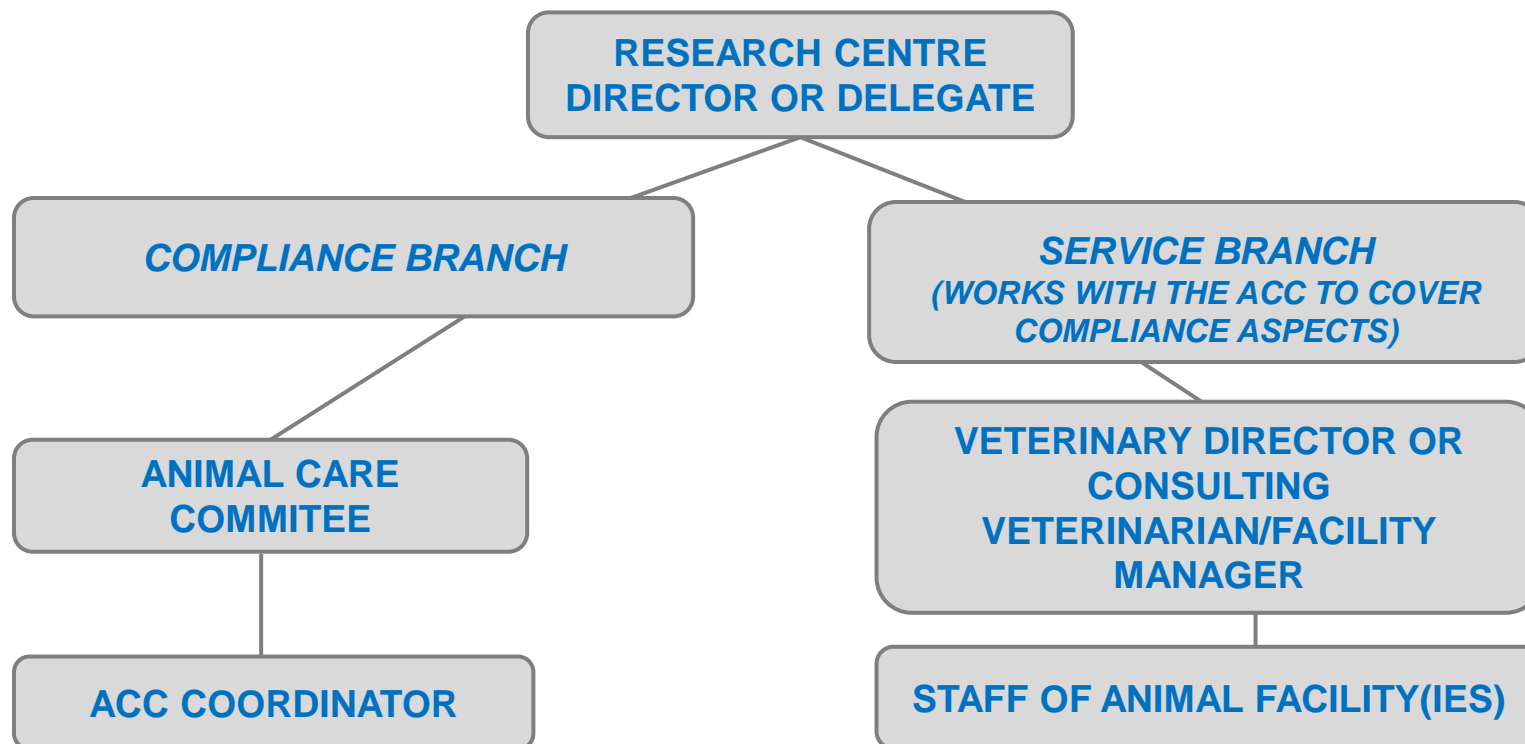


Colleges



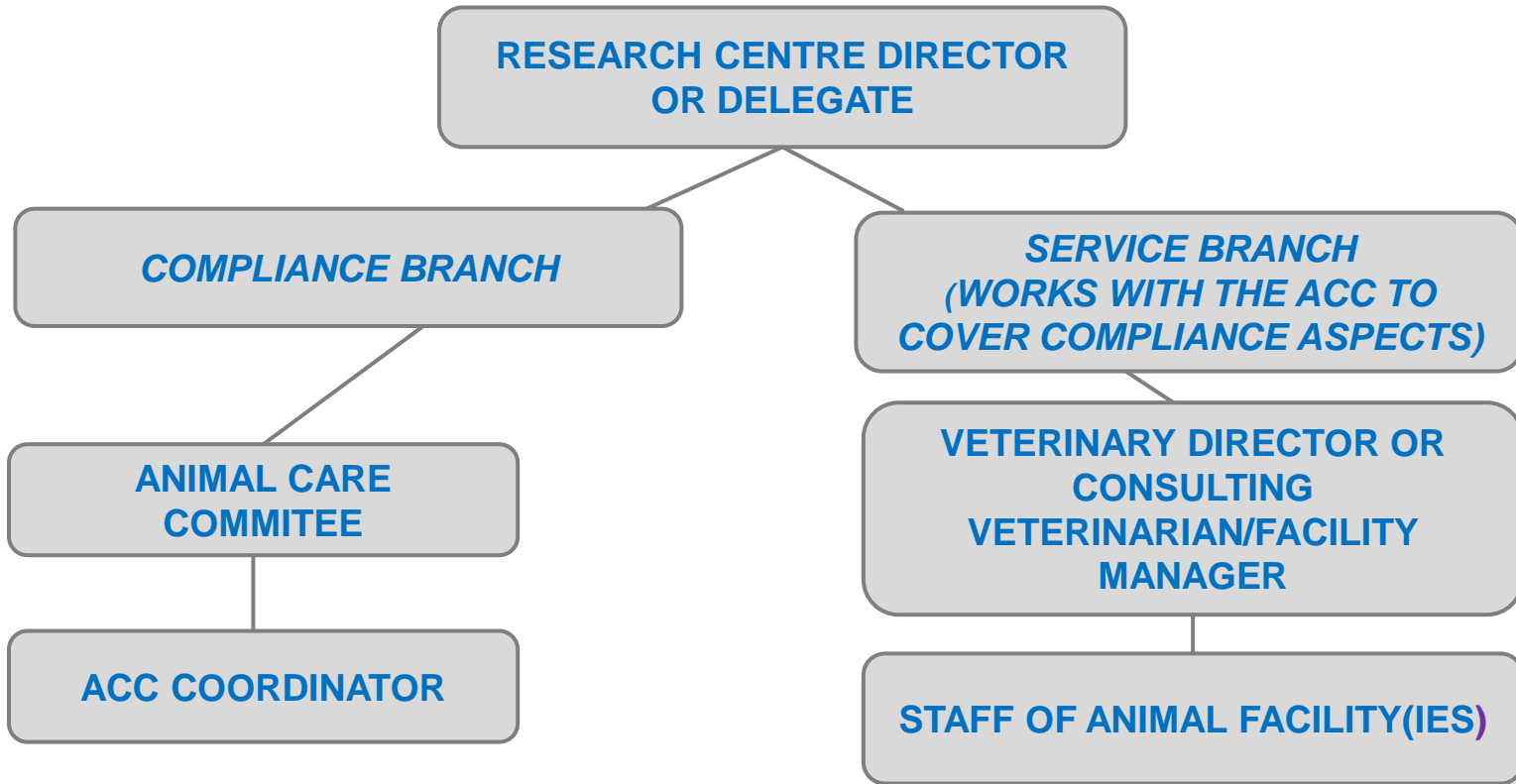


Hospital Research Centres





Government Research Centres



Thank You!

Resources

- Senior administrators responsible for animal care and use program Senior admin
 - http://www.ccac.ca/Documents/Standards/Policies/Senior_administrators.pdf
- Terms of reference for animal care committees
 - http://www.ccac.ca/Documents/Standards/Policies/Terms_of_reference_for_ACC.pdf

